

e^N-Check 2500

The new standard in check readers



Continuing the tradition of providing the highest performance check readers in the industry, Ingenco designed the e^N-Check 2500 with an array of superior features. Its ergonomic design enhances its appearance and improves its read rate. Its compact size, installation options and versatile operation allow it to be placed virtually anywhere. Its intuitive check staging area and increased processing speed make it the check reader of choice for improving customer service and reducing fraud. And it is brought to you by the company with more check readers installed worldwide than anyone. Ingenco.



Secure transaction and payment solutions

e^N-Check 2500

*The new standard
in check readers*

Quiet, efficient, and accurate. Three words that describe the most versatile check reader on the market today. Ingenico has used the experience we gained in becoming the global leader in check reading technology to bring you the e^N-Check 2500.

Ergonomically Designed for Flexibility and Simplicity

- The angle of the check entry area and intuitive design enhance ease-of-use
- Enhanced cable channeling allows the combined power/communications cable to be routed out the back or side of the e^N-Check 2500

Expressly Created for Superior Performance

- Improved recognition algorithms produce highly-accurate, first-pass reads
- 7-segment display provides detailed "bad check" information
- "Hand back/hold away" ensures that exception items are treated differently than accepted items
- Rapid read times enhance customer service

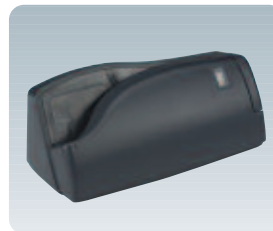
Specifically Built to Protect Your Investment

- Modular design allows users to add future options such as check trays for sorting and interface to PC hosts
- Automatically detects communication interfaces on power up
- Users can implement check conversion with or without the addition of image capture devices
- Optional magnetic stripe reader

TECHNICAL CHARACTERISTICS

e^N-Check 2500

MICR Fonts	E13B, CMC7, and CMC0
Optional Magstripe Reader	Dual or triple track, bi-directional
Average Track Speed	21 inches per second (533 mm per second)
User Display	7 segment readout and LED with 3 colors
Application Software	Preloaded
Programmability	Downloadable via platform, configuration checks or PC Field upgradeable firmware via flash ROM
Interfaces	IBM, NCR, Fujitsu/ICL, Symbol Tech., Verifone and most other POS, PC, wedge and terminal platforms
Protocols	RS232, RS485, TTL, Keyboard Wedge, OCIA, OCRA, MDL and others
Life Expectancy	One million reads
Voltage	4.9 V DC to 16 V DC (maximum, including ripple)
Current	400 mA normal operations (average) 250 mA quiescent
External Power Supply	None required in most installations when at least 300 mA is available from the POS port
Dimensions & Weight	2.78" (70.6 mm) x 3.0" (76.2 mm) x 7.18" (182.4 mm) 13.4 oz (.38 kg)



The smallest footprint in the industry preserves counter space, allowing it to be placed in a variety of positions.



Over 400 parsing algorithms ensure the highest read accuracy in the market.

Ingenico Inc.

6195 Shiloh Road, Suite D
Alpharetta, GA 30005
Tel: (678) 456-1200 - Fax: (678) 456-1201
www.ingenico-us.com

Ingenico Canada Ltd.

79 Torbarrie Road - Toronto, Ontario
Canada M3L 1G5
Tel: (416) 245-6700 - Fax: (416) 245-6701
www.ingenico-ca.com

Legacy Technology Services

We Rent & Sell All Types Of Barcode Equipment

Call now to talk to an expert

866-271-9891

www.LegacyGlobal.com

Some brands we carry



MOTOROLA

Intermec

DATALOGIC™

Honeywell

EQUINOX
PAYMENTS



About us

- Legacy Technology Services is a leading nationwide provider of mobile computing, barcode, printers and point of sale equipment and services.
- For over a decade, thousands of clients across North America have trusted us to provide equipment from leading manufacturers backed by the services to support them.

Latest Hardware from top manufacturers

- Legacy handles virtually every major manufacturer of mobile computing, barcoding and point of sale equipment.

Expert Repair and Maintenance services

- Legacy is one of the best repair facilities in North America

Discontinued product sourcing

- They don't make it anymore? Our inventory also includes manufacturer close-outs and discontinued equipment to support our clients legacy infrastructure.

Trade-in and Disposal services

- That old equipment laying around your facility may still have some value. Legacy routinely purchases equipment from our clients around the globe.
 - Data destruction
 - Hardware disposal
 - Auditing services

Dedicated client account team

- Dedicated, highly trained account managers are here to answer all your questions and provide top notch service.

Equipment rental services

- Sometimes renting is a better solution, Legacy's huge rental inventory provides the equipment you need for temporary needs and projects.



Legacy, Inc.

160 West Road,
Ellington, CT 06029

Toll Free: 866-271-9891

Fax: 888-522-4684